

Factory glazed frame constructed from extruded aluminium profile, thermally broken with polyamide insulation sections. Supplied as standard polyester powder coated to dual colour finish. RAL 9010 (White) to internal section and RAL 9005 (Black) to external section.

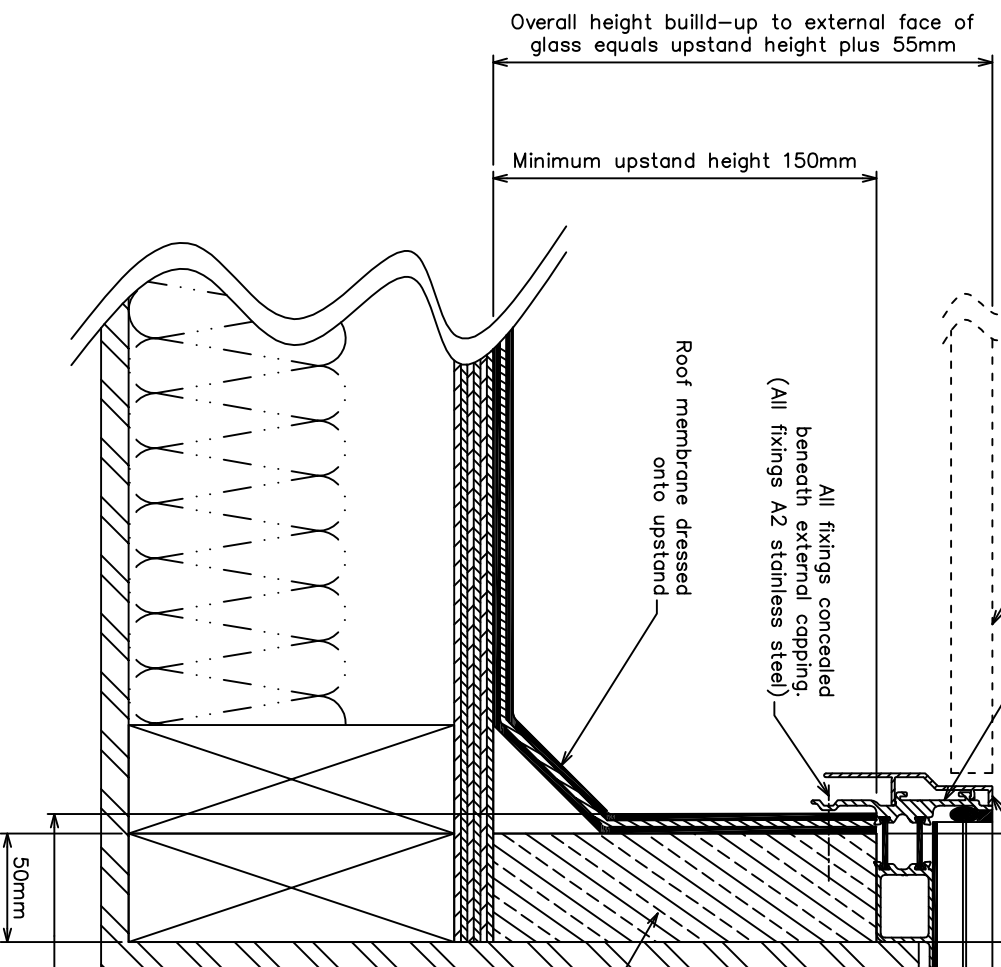
Timber decking or roof-top paving to be positioned to align with top face of glass/framework.

Extruded aluminium 'clip-on' capping profile, supplied as standard polyester powder coated to RAL 9005 (Black).

47.5mm Insulating glass unit, comprising of:
 25.5mm Toughened heat soaked and laminated outer pane, (incl. as standard ceramic frit anti-slip coating),
 16mm Argon filled cavity (Silicone sealed),
 6mm Clear toughened super low-E inner pane.

Timber upstand supplied by others. Must not exceed 50mm to utilise the Decorstop feature.

12.7mm Plasterboard and Skim (By Others)



Section Through Upstand/Framework Construction



National Domelight Company
 Tel. 01276 451555
 Fax. 01276 453666
 info@nationaldomes.com
 www.nationaldomes.com

Rev:	Description:	By:	Date:	Tolerances:	Drawn:	Finish:	Project Ref:
				X ± 0.5mm X.X ± 0.25mm X.XX ± 0.10mm angles ± 0.5°	JB Date: Oct 2005	Not Applicable Materials: Not Applicable	Skyglaze Walk On Description/Location:
				DO NOT SCALE	Third angle projection	Quantity: Not Applicable	Dwg No: WO-NONSTD-002